

**TOSHIBA**

Leading Innovation >>>

**e-STUDIO233**



The all-in-one solution for all office needs.

**e-STUDIO**

A high-performance MFP satisfying a wide range of business needs while delivering heightened security.

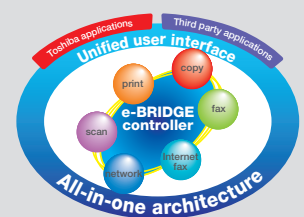
**e-STUDIO233**



Incorporating the 2<sup>nd</sup> generation e-BRIDGE Controller, the high-performance e-STUDIO233 has been developed to satisfy today's elevated office demands with diverse networking versatility, enhanced image quality and tightened security measures. What's more, it confers the advantage of minimum TCO (Total Cost of Ownership) through extended toner life and various improvements that streamline office workflow.

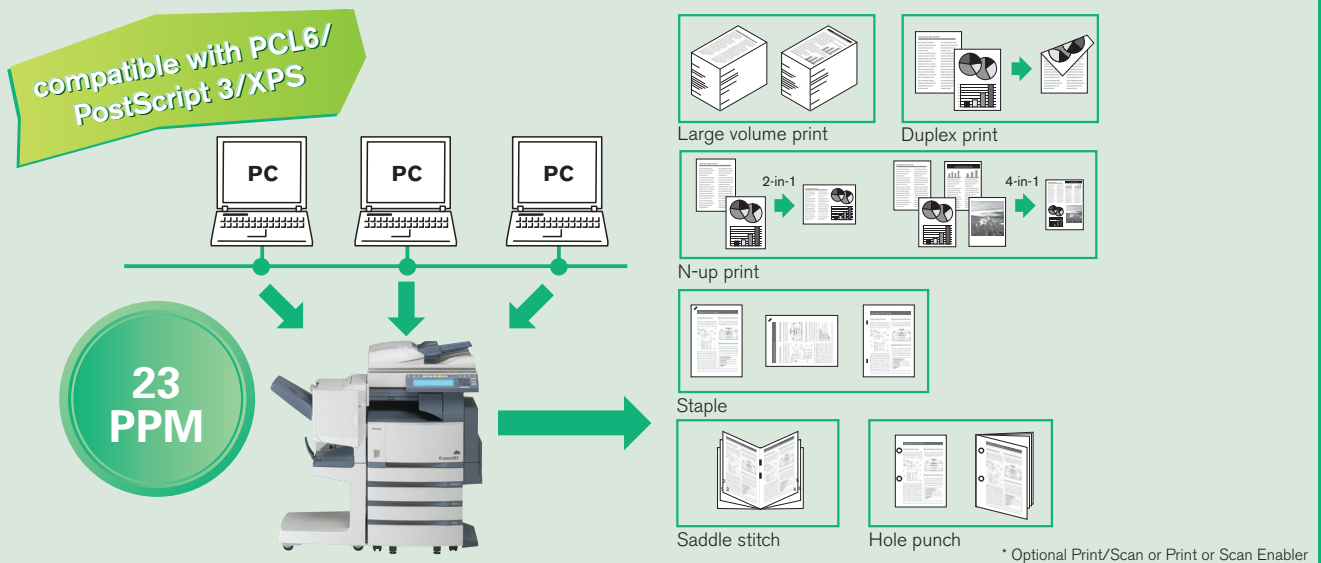
#### **Toshiba's 2<sup>nd</sup> generation e-BRIDGE**

The Toshiba's e-BRIDGE technology takes MFP performance to a satisfying new level. Supporting more efficient performance, it accelerates the workflow of the entire network. Enabling tighter security, it provides administrators with effective management, password assurance and the ability to restrict access by department or even individual with user-friendliness.



## Higher performance for new productivity.

### Swift 23 ppm performance and finishing options



**Private Print** allows users to print out confidential documents.

Once the jobs are sent to the hard disk of the e-STUDIO233, the user simply enters his or her password on the Touch Panel Display to gain access.

Simply convenient is the **Proof Print** function, which allows users to print out just a single copy of a multiple page document for checking purposes prior to volume production. This function could save a great deal of papers and toner consumption if an error is spotted during the proof.

#### ■ Enhanced Print for optimal print quality

Toshiba's proprietary filter processes every pixel of an image to ensure accurate contrast, smooth gradations. What's more, the e-STUDIO233 employs Toshiba's edge processing technology, which ensures edges are clear and smooth for both copied and printed text and graphics.

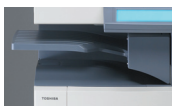
#### ■ Job Separator

An optional Job separator allows output to be easily distinguished by placement in different areas. Creating two "bins" in the Inner Exit Tray area, it allows fax jobs to be fed into the upper space, for example, while print and copy jobs are automatically directed to the one below.



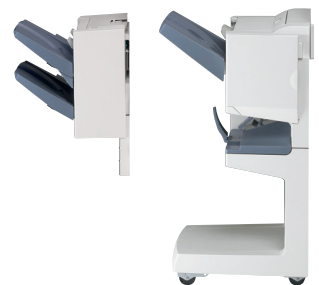
#### ■ Offset Tray

An optional Offset tray allows simple sorting in minimal space, by "staggering" an output job for instant recognition.



#### ■ Two optional finishers

Because each office has unique demand, Toshiba offers a choice of two optional finishers, each of which has stapling and sorting capability. Simply select the one that best suits your business from a hanging type finisher, and a console finisher. The console finisher also allows for multi-position stapling and saddle-stitching.

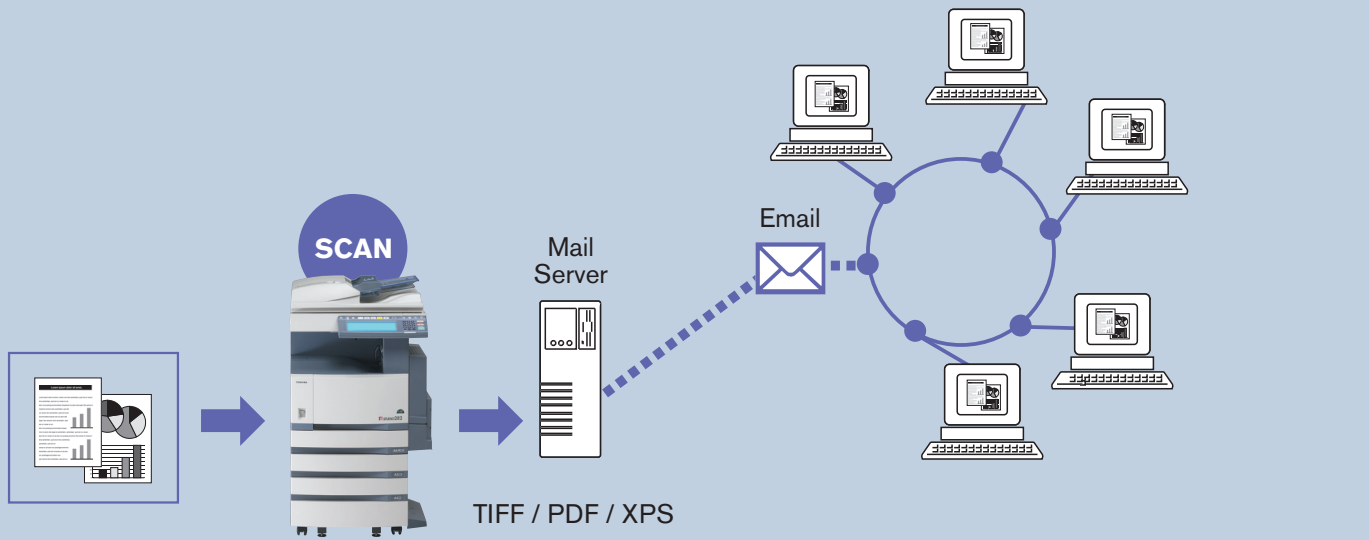


#### ■ Hole Punch Unit

A console finisher offers an additional advantage of having Hole Punch capability. This option allows you to punch sets of documents with holes for easy binding.

## The power of 50spm high-speed scanning.

### Scanning advantages



\* Optional Print/Scan or Print or Scan Enabler

Optional scanning capability makes it easier to convert paper documents into electronic files without the need for separate applications. One of the many scanning benefits are better document management with easy sharing, editing or combination with other documents. The e-STUDIO233 brings you all of these benefits at an impressive scanning speed of 50\* sheets per minute.

#### ■ Scan-to-file

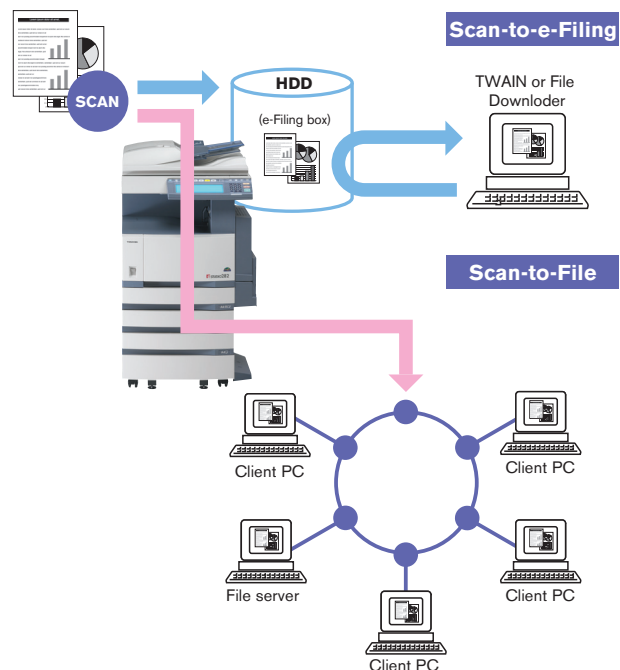
This handy function allows pages to be scanned in either TIFF, PDF or XPS formats that will be sent automatically to a file server or client PC for easier access.

#### ■ Scan-to-e-Filing

Scan-to-e-Filing allows data to be stored in the Hard Disk Drive (HDD) of the e-STUDIO233 for output to print at any time in the future. This stored information can be merged with ease and even combined with data from different sources.

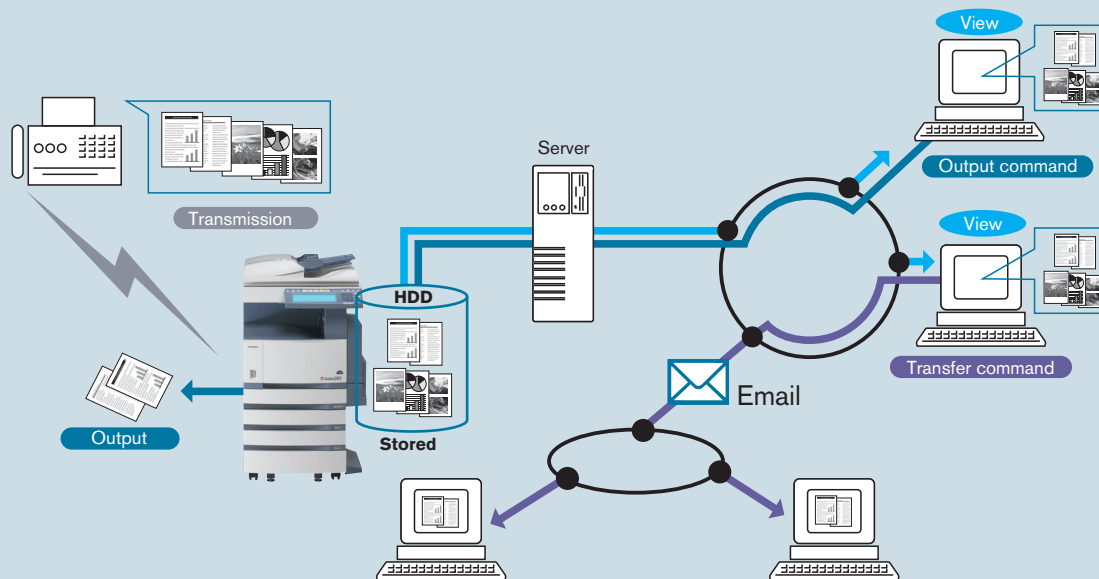
#### ■ Scan-to-Email

Scan to Email allows paper documents to be digitised in either TIFF, PDF or XPS formats, attached to Email, and be swiftly sent in one smooth operation.



Print the pages you need; respond with greater speed.

## Fax



\* Optional Fax and 2nd Fax Line Enabler

The e-STUDIO233 offers the convenience of Network-Fax, which enables paperless transmission, as well as the ability to store received faxes on your server or redirect them to Email – giving you the power to print only what you want, when you want. The optional Fax board and RADF add versatility and speed. For transmission, the RADF feeds originals continuously and automatically, even if they are double-sided. And for more cost effective, eco-friendly reception, adding the Automatic Duplexing Unit (ADU) allows double-sided output.

### ■ Super G3 Fax

Super G3 Fax allows each page to be sent at the impressive speed of only 3 seconds\*, without compromising image quality.

\*Under optimum conditions. Transmission speed may vary depending on provider, conditions, etc.

### ■ Network Fax

Network Fax allows faxes to be sent directly from any PC in the network. The function also supports networked fax reception too, using ITU-T F-code communication.

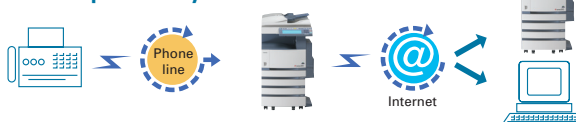
### ■ Internet Fax

Internet Fax makes use of Internet connection to support international or long-distance faxing with minimised cost.

### ■ On Ramp/Off Ramp Gateway functions

On Ramp Gateway allows documents to be received from F-code compatible G3 faxes and relayed to other Internet fax machines or PCs, while selection of the Off Ramp Gateway lets you turn the e-STUDIO233 into a communications hub — receiving Email and forwarding the messages to other offices as faxes via the Public Switched Telephone Network (PSTN). Furthermore, the e-STUDIO233 uses the Internet for long distance faxes and the PSTN for local faxes, ensuring the most economical transmission type for each. It also allows both On Ramp and Off Ramp Gateway functions to be set to work simultaneously.

#### On Ramp Gateway function

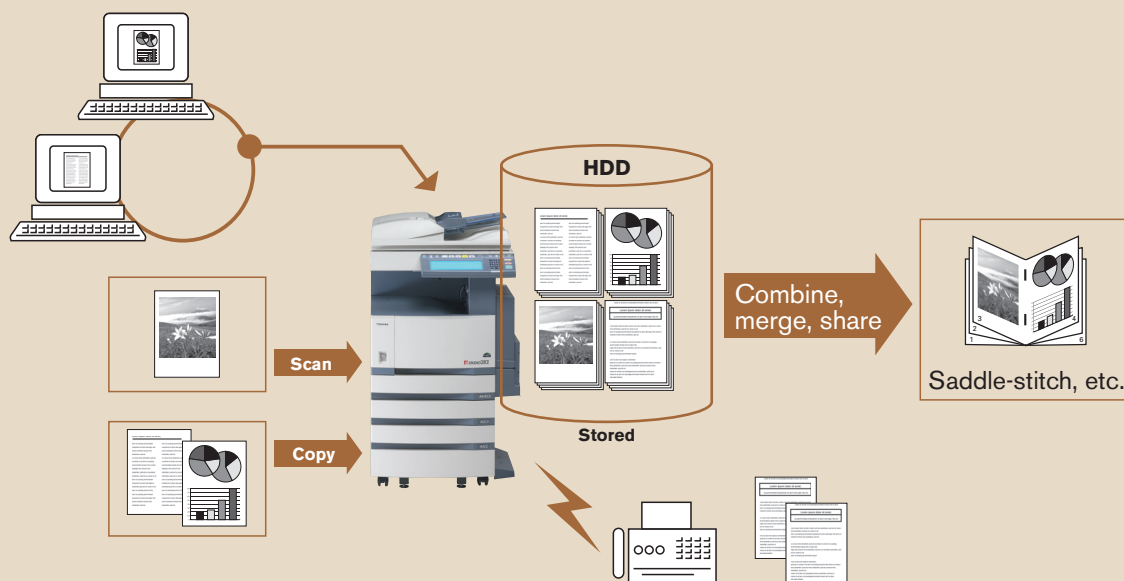


#### Off Ramp Gateway function



## e-Filing adds versatility to file creation and storage.

### e-Filing



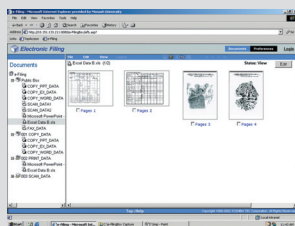
Whether dealing with standard copy jobs or optional copy, fax, print or scan jobs, the e-STUDIO233 can store all data in the e-Filing box. Up to 200 individual User Boxes can be set up easily by the administrator or individual users. A Public Box is also made available that can be accessed by everyone within the network.

#### ■ Box and folder convenience

The e-STUDIO233 offers a range of related functions that ensure user-specific security, as well as the convenience of operation via the client PC or the control panel.

#### ■ e-Filing Web utility

The e-Filing Web utility allows each member of the network to benefit from the convenience of e-Filing, with simple browser-based control and user-friendly thumbnail display.

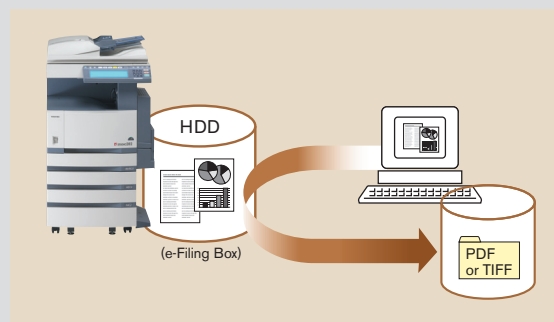


#### ■ Simultaneous storage and job execution

For additional versatility, storage can be done at the same time a job is carried out, allowing you to save on unnecessary time and effort.

#### ■ Standard File Downloader/TWAIN driver

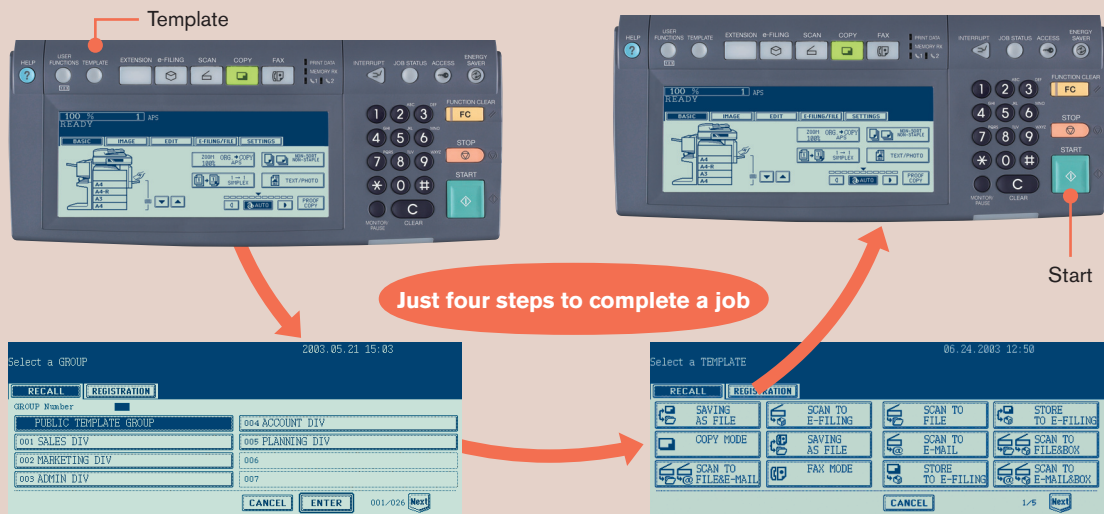
Through use of the exclusive File Downloader/TWAIN driver application, all stored data can be easily saved in PDF/ TIFF/XPS format on your PC via the network.





Just select a template and let e-STUDIO233 does the rest.

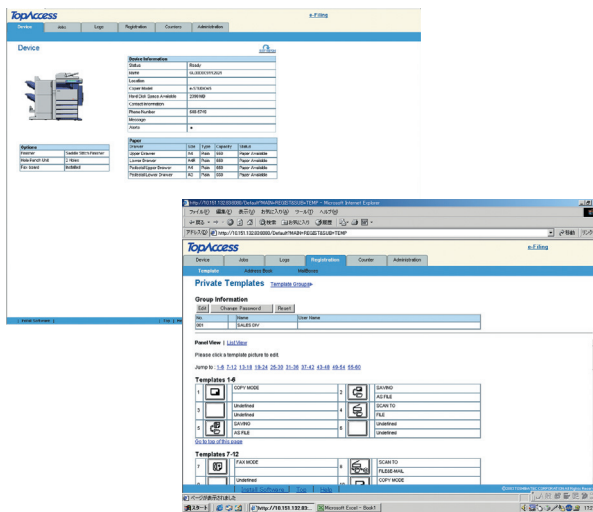
## Time-saving Template function



Exceptional time-saving convenience comes in the form of the handy, highly versatile Template function, which allows frequently used settings to be saved to increase efficiency during scanning, copying, faxing and e-filing. This useful function allows extremely easy template registrations of even the most complex combinations of settings, making them available for future usage with just a single touch. Thanks to its standard HDD, the e-STUDIO233 allows up to 12,060 templates to be registered in an easy-to-understand layer format – that's 60 templates for each 200 individual group of users plus another 60 for public use. These can be created via the control panel. And for further control, the function also provides the user with the ability to preset elements such as resolution, recipient address, and finishing options too.

### ■ TopAccess

This innovative function adds browser-based convenience to job and device management. It allows control to be taken from any PC in the network and even supports the creation and modification of templates and address book management.

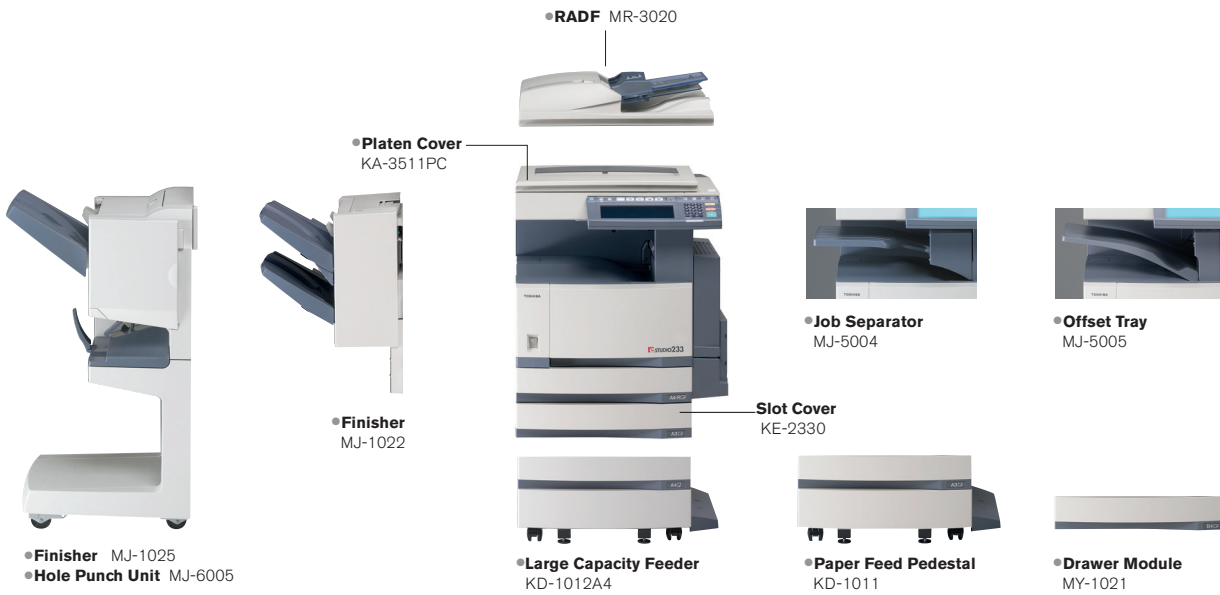


### ■ TopAccessDocMon

TopAccessDocMon empowers every member of the network with integrated control over jobs and devices. It also serves to reduce downtime by sending pop-up alerts to PCs when the e-STUDIO233 requires attention, or when paper needs to be replenished.



Various options are available to suit your requirements.



• **Finisher** MJ-1025  
• **Hole Punch Unit** MJ-6005

• **Large Capacity Feeder** KD-1012A4

• **Paper Feed Pedestal** KD-1011

• **Drawer Module** MY-1021

- **ADU** MD-0102
- **Fax Board** GD-1151AS/NA
- **Work Tray** KK-3511
- **Fax 2nd Line Board** GD-1260AU/NA
- **Scrambler Board** GP-1040
- **PCI Slot** GO-1060
- **Wireless LAN Module** GN-1041
- **Bridge Kit** KN-3520
- **Harness Kit for Coin Controller** GQ-1020
- **Bluetooth** GN-2010
- **Antenna** GN-3010

• **Data Overwrite Enabler** GP-1060

• **Printer Enabler** GM-1071

• **Printer/Scanner Enabler** GM-2071

• **Scanner Enabler** GM-4070

**Toshiba: Benefiting your business, caring for the environment.**

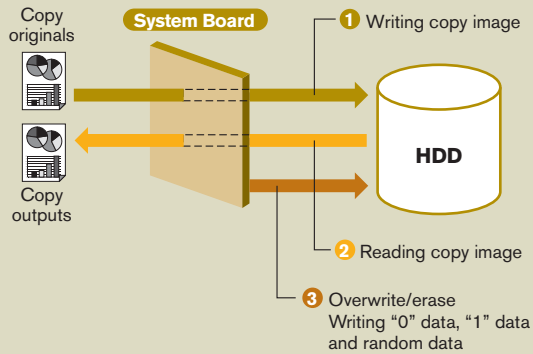
By choosing Toshiba technology, you actively contribute to Toshiba's efforts for environmental protection by making use of products that impart minimum ecological impact. The e-STUDIO233 is excellent examples of Toshiba's efforts for environmental protection — complying with the "ENERGY STAR" energy-saving requirements of the U. S. Environmental Protection Agency (EPA) and the RoHS (Restriction of Hazardous Substances) requirements of the European Union for 2006.

At Toshiba, such environmental awareness also extends to production facilities too. Indeed Toshiba is proud that four copier sales affiliates and all Toshiba TEC manufacturing facilities have been awarded ISO 14001 certification — the internationally recognized standard for environment management systems that minimize the ecological impact of business activities.

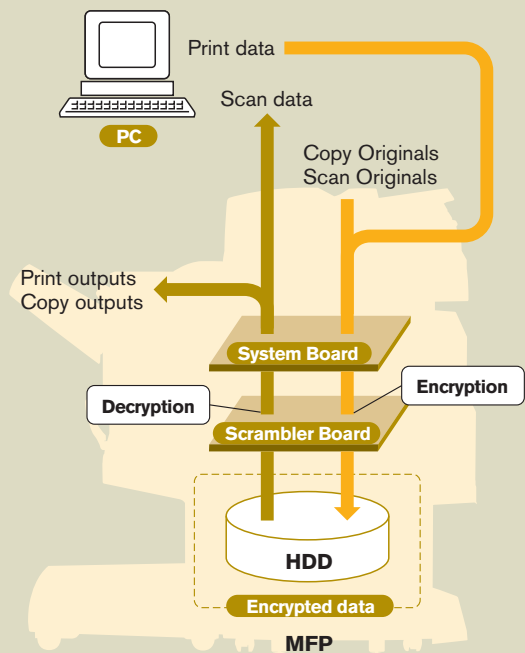


## Extensive features for extended performance.

### Security



- SMTP authentication
- LDAP authentication with Kerberos
- Active Directory with NTLM/Kerberos
- Role Based Access Control
- Private Print
- Optional Scrambler Board
- Optional Data Overwrite kit
- Wi-Fi authentication (WPA2) with Optional Wireless LAN antenna



Equipped with a diverse range of security measures, the e-STUDIO233 strictly controls access to confidential office information and helps safeguard against the dangers of data leakage.

#### ■ Optional wireless LAN compatibility

With IEEE802.11g capability, the e-STUDIO233 each offer the option of built-in wireless LAN performance — enabling a swift 54Mbps (max.) connection for your network.

#### ■ Easy expansion of network capabilities

The optional expansion enablers for the e-STUDIO233 come in the form of compact plug-and-play "keys", which make the insertion of new boards a thing of the past. Simply insert the "key" of your choice into one of the e-STUDIO's two USB sockets and new capabilities are unleashed. No installation, no hassle; just extended performance.

\*Optional expansion kits include a Printer kit, Scanner kit and a Printer/Scanner kit.

#### ■ Printer Driver

The e-STUDIO233 incorporates an easy-to-use Toshiba graphics-based print driver that makes use of common driver technology. Allowing easy operation via simple-to-understand menus and making all functions available from each and every PC in the network, this e-BRIDGE-enabled innovation makes it easy to increase overall productivity.

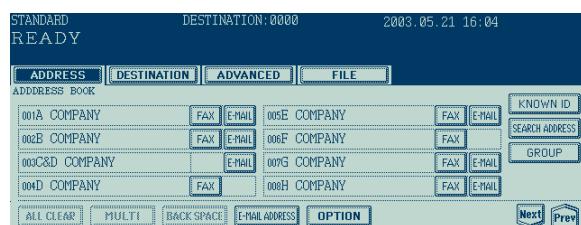
## ■ Job Build function

The extremely handy Job Build function makes it possible to scan multiple copy jobs and then copy them all as one.

Functions that are particularly handy when originals exist in both single-sided and duplex format or when image modes need to be altered from one original to another, You'll be surprised at the acceleration they bring to everyday operations.

## ■ Address book

The e-STUDIO233 also offers a user-friendly address book function, which speeds and simplifies the input of fax numbers and Email addresses. Both a fax number and an Email/Internet fax address can be stored as a single entry for each party, and usage really couldn't be simpler — supporting access from the control panel or through the Web-based TopAccess utility.



## ■ LDAP search/import

The Lightweight Directory Access Protocol (LDAP) search/import function lets you access your mail server's address book in a seamless manner, eliminating the need to enter addresses each and every time you send Email. Such capability is of particular use when using features such as Scan to Email and Internet Fax.

- Rapid 23cpm/ppm performance
- 45spm (scans per minute) while copying
- Swift warm-up time of approx. 25 sec.
- Fast first copy delivery in just 5.4 sec.

## ■ High-quality copying

- Text, Text/photo, and Photo modes ensure optimum results
- 600 x 600dpi delivers high-clarity scanning resolution in all modes

- 2400 dpi x 600 dpi for sharp print outs

## ■ Large, user-friendly, tilting control panel

- 1/2 VGA-size control panel
- Easy-to-see icons
- Tilt function enhances visibility in various situations
- Full QWERTY keyboard for easy input and operation



## ■ Ample paper handling capacity



## ■ Thick paper and envelope copying/printing

## ■ Advanced toner recycling technology

## ■ TOSHIBA original supplies

It is recommended that only supplies made or designated by TOSHIBA be used for this machine in order to get optimum results.



# Specifications

## General

Type	Desktop
Printing/Copying process	Indirect electrostatic photographic method
Original scanning method	CCD line sensor
Paper input capacity (80g/m <sup>2</sup> , A4)	Standard (650 sheets): 550 sheets x Drawer 1, 100 sheets x 1 Bypass Maximum (3,700 sheets): 550 sheets x Drawer 1 (Std.), 100 sheets x 1 Bypass, 550 sheets x Drawer 2 (Opt.), 2,500 sheets x 1 LCF A3-ASR (Drawer), A3-ASR (Bypass)
Paper size	Standard: 64-105 g/m <sup>2</sup> (Drawer), 64-209 g/m <sup>2</sup> (Bypass-Multi-Feed), 50-209 g/m <sup>2</sup> (Bypass-Single-Feed)
Paper weight	Optional
ADU (Automatic Duplexing Unit)	Processor
Processor	Memory (RAM)
Hard disk drive	Hard disk drive
Page memory	Warm-up time
Warm-up time	Power consumption
Power consumption	Dimensions (W x D x H) & weight
Dimensions (W x D x H) & weight	

## Print Specifications

Resolution	2,400 dpi x 600 dpi (with smoothing)
Printing speed	23 ppm (A4)
Interface	10/100BaseT, Full-speed USB, Opt.: IEEE802.11b/g (WiFi), Bluetooth (HCRP / BIP)
Protocols	Windows Printing (SMB), LPR / LPD, IPP (Ver.1.1) w/ Authentication, NetWare P-SERVER (w/NDS, w/Binary, w/TOSHIBA NDPS Gateway, LPD w/ iPrint, AppleTalk PAP or EtherTalk, Port 9100 (bi-directional), Bluetooth (HCRP/BIP)
Supported system/drivers	Windows (98 - SE Recommended, Me, NT4.0 - SP6a Recommended, 2000 - SP4 Recommended, XP 32 bit - SP2 Recommended, XP X64 64 bit, 2003 server 32 bit - SP1 Recommended, 2003 server X64 64 bit, Vista 32 / 64 bit, 2008 Mac OS 8.6, 9.X, 10.1, 10.2, 10.3, 10.4, 10.5 or Higher (Mac PPD for LaserWriter)
PDL	Unix (Solaris SUN 2.6, 2.7, 7.8, 8, 9 / HP-UX 10.20, 11.X / AIX IBM 4.3.3 / Linux Redhat 7.x, 8.x, 9.x, Redhat Enterprise WS2 / SuSE Linux 7.x, 8.x, 9.x / Mandrake Linux 7.x, 8.x, 9.x / Turbo Linux 8, 10 / SCO UnixWare7, OpenUnix8)
Major features	CUPS XPS, PCL6 <sup>1</sup> & PostScript <sup>3</sup> compatible
Major features	-Proof Print -Private Print -Scheduled Print -Duplex Printing -Watermark Printing -N-up Printing -Mixed-size Printing -Magazine Sort -Image Overlay -Front/Back Cover Insertion -Page Insertion -Save-to-Box (e-filing) -Department Codes Control

## Copy Specifications

Resolution	Scanning: 600 dpi x 600 dpi Printing: 2,400 dpi x 600 dpi (with smoothing)
Gradation	256 steps
Copying speed	23 cpm (A4)
Original scanning speed	45 spm (A4) at 600 dpi
First copy out time	5.4 seconds
Multiple copying	Up to 999 copies
Copy mode	Text, Text/Photo (Default), Photo, Custom
Reproduction ratio	25-400% in 1% increment (Platen), 25-200% in 1% increment (RADF)
Exposure control	Automatic / Manual (11 steps)
Major features	-Energy Saver -Trimming / Masking -Department Code (1,000 kinds) -Cover Sheet -Sheet Insertion -X-Y Zoom -Proof Copy -Magazine Sort -Alteration -2-in-1, 4-in-1, 8-in-1 -Annotation (Date / Time Print) -Job Reservation -Rotation Copy -Thick Paper Mode

## Scan Specifications

Resolution	600, 400, 300, 200, 150dpi
Scanning speed	50 spm (A4; 150, 200, 300, 400 dpi); 45 spm (A4; 600 dpi)
File formats	Multi / Single-page (TIFF, PDF, XPS)
Major features	-2-sided Scan -Image Rotation (4 directions) -Mixed Size Paper Scanning -Scan-to-Email -Scan-to-File -Scan-to-e-Filing

## Fax Specifications

Compatibilities	Super G3, G3 (2nd line - Opt.), T.37 (Internet Fax)
Modem speed	Max. 33.6kbps
Transmission speed	Approx. 3 seconds per page
Data compression methods	JBIG, MMR, MR, MH
Scanning mode	Text, Photo/Text, Photo
Memory capacity (HDD)	500 MB (Transmission / F Code), 120 MB (Reception), Permanent (Back-up)
Original document sizes	A3, B4, A4, A4-R, A5, B5, B5-R, A5-R, LT, LT-R, LG, LD, ST, ST-R, Comp, Folio
Major Features	-Telephone Book (1,000 destinations) -Broadcasting -Automatic Redialling -Group Dialling (200 groups, 400 destinations per group) -Chain Dialling -Delayed, Recovery & Batch Transmissions -Polling -Mailbox (F-code)

## Internet Fax Specifications

Connectivity supported	T.37 (Simple Mode)
Sent attachments format	TIFF-S / F
Original document sizes	A3, B4, A4, A4-R, A5, B5, B5-R, A5-R, LT, LT-R, LG, LD, ST, ST-R, Comp, Folio (Image will be reduced to A4 size and transmitted when original is any size of A3, B4, LG, LD or Folio)
Major features	-On Ramp Gateway (Through the MailBox) -Off Ramp Gateway -Telephone Book (1,000 destinations) -Sent to File (SMB/FTP/IPX) -Sent to E-mail -Sent to Internet Fax. Sent-to-Box

## Network Fax Specifications

Supported OS	Windows (98, Me, NT4.0, 2000, XP 32 bit / 64 bit, Server 2003 32 bit / 64 bit, Vista 32 bit)
--------------	--

## Electronic Filing Specifications

Number of boxes	Public Box:1, User Box: 200
Number of folders	100 folders per Box
Number of documents	400 documents per Box/Folder
Number of pages	1,000 pages per document
Capacity (HDD)	5GB
Input-to-box	Copy-to-Box, Print-to-Box, Received Fax-to-Box, Received Internet Fax-to-Box, Scan-to-Box (Depending on installed options)
Box N/W access applications	TWAIN Driver, File Downloader

## Network/Device Management Utility

-TopAccess -TopAccessDocMon

## Options

### Covers

RADF (Reversing Automatic Document Feeder) (MR-3020)	100 sheets (A4, A3) (up to 1,000 pages in continuous mode)
Original capacity	Face-up
Original setting	A4, A3, B5, A4-R, A5-R, B5-R, 35-157 g/m <sup>2</sup> (single sided), 50-157 g/m <sup>2</sup> (double-sided)
Available original size & weight	600 x 523 x 135 (mm), 12.5 kg

### Platen Cover (KA-3511PC)

### Inner Trays

Job Separator (MJ-5004)	Capacity	Upper tray: 150 sheets (Measured at 80 g/m <sup>2</sup> ) Lower tray: 250 sheets (Measured at 80 g/m <sup>2</sup> )
Capacity	Paper size & weight	Upper tray: A3-A5R, 64-105 g/m <sup>2</sup> Lower tray: A3-A5R, 50-209 g/m <sup>2</sup>
Paper size & weight	Dimensions (W x D x H) & weight	498 x 415 x 153 (mm), 3.3 kg

### Offset Tray (MJ-5005)

Capacity	250 sheets (Measured at 80 g/m <sup>2</sup> )
Paper size & weight	A3-A5, 50-209 g/m <sup>2</sup>
Dimensions (W x D x H) & weight	500 x 415 x 169 (mm), 3.5 kg

### Finishers

#### Hanging Type (MJ-1022)

Trays	2
Capacity	1st Bin: Max. 200 sheets (A4, B5, A4-R, B5-R, A5-R), (Measured at 80 g/m <sup>2</sup> ) 2nd Bin: Max. 700 sheets (A4, B5, A4-R, B5-R, A5-R), (Measured at 80 g/m <sup>2</sup> ) Max. 30 sheets (A4, A4-R, B5), (Measured at 80 g/m <sup>2</sup> ) Single-position
Staple capacity	451 x 539 x 590 (mm), Approx. 17 kg
Staple position	
Dimensions (W x D x H) & weight	

#### Saddle-Stitch Type (MJ-1025)

Trays	1
Capacity & paper weight	Max. 1,000 sheets (A4, A4-R, B5, A5-R), (Measured at 80 g/m <sup>2</sup> )
Staple capacity	Max. 50 sheets (A4, B5, A4-R), (Measured at 80 g/m <sup>2</sup> )
Staple position	Multi-position (3 kinds), Saddle-stitch
Saddle-stitch	Paper size: A3, B4, A4-R Staple capacity: Max. 10 sheets (Measured at 80 g/m <sup>2</sup> )
Dimensions (W x D x H) & weight	538 x 603 x 1,011 (mm), Approx. 38 kg

### Hole Punch Unit (MJ-6005) (for MJ-1025)

Dimensions (W x D x H) & weight	90 x 560 x 170 (mm), Approx. 4 kg
---------------------------------	-----------------------------------

### Drawers

#### Large Capacity Feeder (KD-1012A4)

Paper supply	2,500 sheets
Available paper size & weight	A4, 64-105 g/m <sup>2</sup>
Dimensions (W x D x H) & weight	530 x 577 x 307.5 (mm), 27 kg

#### Paper Feed Pedestal (KD-1011)

Paper supply	550 sheets
Available paper size & weight	A3-A5R, 64-105 g/m <sup>2</sup>
Dimensions (W x D x H) & weight	530 x 577 x 320 (mm), 21.5 kg

#### Drawer Module (MY-1021) (for KD-1011)

Paper supply	550 sheets
Available paper size & weight	A3-A5R, 64-105 g/m <sup>2</sup>
Dimensions (W x D x H) & weight	526 x 569 x 107 (mm), 3.8 kg

#### Desk (MH-1710)

#### Bridge Kit (KN-3520)

Dimensions (W x D x H) & weight	*Pre-requisite for installation of Finisher 546 x 489 x 44.4 (mm), 1.6 kg
---------------------------------	--

#### Work Tray (KK-3511)

Dimensions (W x D x H) & weight	282 x 471 x 108.2 (mm), 1.1 kg
---------------------------------	--------------------------------

#### 512 MB Expansion Memory (GC-1230) \*Required for XPS

#### ADU (MD-0102)

#### Slot Cover (KE-2330) \*SAD: Opt.

#### PCI Slot (GO-1060) \*Pre-requisite for installation of Scrambler Board

### Network Utilities

Printer Kit (GM-1071) / Scanner Kit (GM-4070) / Printer/Scanner Kit (GM-2071)

### Document Capture / Workflow

e-BRIDGE RE-RITE (GB-1280)

### Information Communications Security

Harness Kit for Coin Controller (GQ-1020) / Scrambler Board (GP-1040) /

Data Overwrite Enabler (GP-1060) / e-BRIDGE ID-GATE (KP-2004 HID / KP-2005 MIFARE)

### Communications Connections

Fax Kit (GD-1151 AS / NA) / Fax Kit 2nd Line (GD-1260 AU / NA) /

Wireless LAN Module (GN-1041) / Bluetooth Module (GN-2010) /

Antenna (GN-3010) (for GN-1041 and GN-2010)

## ISO 9001 and ISO 14001 Certifications

These highly acclaimed certifications are recognised worldwide as measures of top quality and environmental management excellence. They are awarded to manufacturers for facilities and practices meeting strict standards set by the Geneva based International Standardization Organization. To date, four copier sales affiliates and all Toshiba TEC manufacturing facilities where copiers, accessories, supplies and parts are produced have received ISO 9001 certification, while four copier sales affiliate and all Toshiba TEC manufacturing facilities have received ISO 14001 certification — even more reasons to count on Toshiba.

Microsoft, Windows, and Windows NT are registered trademarks of Microsoft Corporation in the United States and/or other countries.

NetWare is a registered trademark of Novell, Inc.

Adobe PostScript Level 2™ is a registered trademark of Adobe Systems, Inc.

Macintosh is a registered trademark of Apple Computer, Inc.

All other brand and/or product names are trademarks of their respective owners.

Design and specifications subject to change without notice. The colour(s) of the actual product may vary from the colour(s) shown in this brochure. No part of this material may be used or reproduced in any manner whatsoever without permission. 1GB is equivalent to 1 billion bytes. Days for function availability may differ by region. "e-filing" is an abbreviation of "electronic filing". ©2005 TOSHIBA TEC CORPORATION All rights reserved.

As an ENERGY STAR Partner TOSHIBA TEC CORPORATION has determined that this multifunction device model meets the ENERGY STAR guidelines for energy efficiency.

These multifunction devices comply with the Wi-Fi standard.



DISTRIBUTED BY

## Paragon Document Solutions Limited

Head office:

21 Effie Road  
Fulham  
London  
SW6 1EN

Contact us:

www.paragon-ds.co.uk  
0845 521 1420  
info@paragon-ds.co.uk



These multifunction devices comply with the Wi-Fi standard.

**TOSHIBA**  
TOSHIBA SINGAPORE Pte., Ltd.